



**okti**

Everything You Want.

Simple. Portable.

Wireless and High Definition.



**Everything You Want.**  
Simple. Portable.  
Wireless and High Definition.

### One device - multiple studies

**Okti**® is the culmination of decades of experience in EEG monitoring and a deep understanding of patient care.

Okti is the world's first high-density portable EEG amplifier for Routine and Long Term EEG testing. By combining several different channel interfaces into a compact hand-held format, Okti's wireless and high-definition capabilities improve the clinical and patient experience within the clinic or hospital with the flexibility to be mobile.

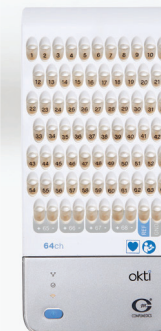
With a focus on the best patient care, Okti delivers everything you want.

### Key Features

- High-density EEG.
- Portable, LTM and Clinical Routine EEG studies.
- Modular, multi-functional design with interchangeable 32, 64 and 128 channel interfaces.
- Pediatric and adult applications.
- Protective lockable shell-case, no interference with the device.
- 72 hours battery life, with hot swappable batteries.
- Full list of accessories, backpack, waist pack, integrated cable management and cradle.
- Reusable and disposable accessories for wearable versions.



® okti32



® okti64



® okti128



Three devices in one - Interchangeable 32, 64 and 128 channel interfaces.



Multi use bracket for fixed studies

Built in large 72 hour battery. Hot - swappable for extended study length

Integrated data storage

10 /20 32 Channel Module

SD card for flexible data transfer

64 Channel Module

128 Channel Head Cap Module

*Everything about the Okti is designed to keep you moving forward and keep the focus on patient care. Utilizing a modular design, the interchangeable interface allows you to do either a 32, 64 or 128 channel study - One device to meet all your routine, portable, and long-term EEG needs.*

### Okti Features

#### Lockable protective case

Protects against deliberate or accidental electrode removal.





#### Smart cable management

Easy manage cable wrap system. Reusable and disposable versions.

#### Patented electrode Illumination system

Enhances the speed of set-up.

-  Bluetooth real-time patient tracking
-  WiFi and Ethernet connectivity

## Okti® System Cart



Cart may vary in your region.  
Please contact your local representative for details.

## Okti® Accessories

A full range of wearables are available in both adult and children's sizes. The ergonomically designed backpacks and waist packs come in fashionable and fun patterns in both reusable and disposable versions.

### Adult backpack and waist pack

Designed to give ample support and flexibility to move around. Comes in both reusable and disposable designs.



Reusable adult backpack

### Child backpack

Distributes load more effectively for children, allowing free movement for play. Pattern design is playful and fun, easing the anxiety of the process.



Reusable adult waist pack



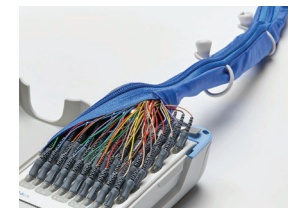
Disposable adult waist pack



Disposable child backpack

### Smart snake cable management

Easy manage cable wrap system comes in both reusable and disposable versions.



Reusable snake cable



Disposable snake cable

All specifications are subject to change without notice. Please contact your Compumedics representative for latest technical information, pricing and product availability. Compumedics Okti, COMPUMEDICS and the Compumedics logo are registered trademarks of Compumedics.