



Compumedics vista

A COMPUMEDICS CLIENT UPDATE, ISSUE 24

SLEEP 2010 Meeting Special Edition
San Antonio, Texas

CELEBRATING

over
20 YEARS
of **SLEEP**
DIAGNOSTICS
EXCELLENCE
Since 1987

*Innovative Solutions
in Sleep &
Neurodiagnostics*

Compumedics Announces the GraeL PSG/EEG System – the First HD-PSG Digital Amplifier

Compumedics is very excited to present at the **SLEEP 2010 Meeting** our newest innovation in Sleep and EEG technology, the **GraeL HD-PSG/EEG System**.

Our most advanced digital amplifier system yet, and the world's first High-Definition amplifier for PSG and EEG applications. Designed with direct global customer input, with the latest in digital electronics, the GraeL is the logical next step when considering replacement of your current PSG or combination PSG/EEG systems.

The GraeL HD-PSG/EEG system extends a string of innovations from Compumedics, which developed such products as: the E-Series PSG/EEG system, the first Ethernet based amplifier system; the Somté PSG system, the first Type I/II portable system with Bluetooth communication; and the Neuvo LTM high-density EEG system, supporting 256+ channels of data at up to 10,000Hz sampling rates.

Clearly, when you are looking for innovative solutions in Sleep and Neurodiagnostics you should be looking at Compumedics.

For more information, contact us at 877.717.3975 or at info@compumedicsusa.com



INSIDE

- Build your ideal Sleep Lab - It's easy with Compumedics **2**
- **NEW** GraeL - True HD PSG/EEG **3**
- Compumedics - the World of Sleep at your fingertips **4**

NEW

GraeL PSG/EEG

- World's First True High-Definition PSG/EEG
- One-Box, One-Cable
- Fully Integrated Signal Set following latest industry guidelines



COMPUMEDICS
"Defining Life's Signals"

www.compumedics.com

Building your sleep lab is as easy as...

Let us show you how.

No matter what your needs are for a sleep lab, Compumedics has everything you require to build a great facility. Whether it is a large, multi-site service, an independent two bed lab or anything in between, Compumedics has the hardware and software solutions you can rely on to run your lab efficiently, effectively and reliably. In addition, Compumedics can reliably meet any of your research needs.

1. Choose your hardware...



Graef PSG/EEG (★)
World's First High-Definition
PSG/EEG



Somté PSG
Full PSG... Absolutely Anywhere



Siesta (★)
Revolutionary PSG & EEG
Diagnostics for a Wireless World



Safiro (★)
Diagnostic Excellence in Ambulatory
PSG & EEG



E-Series (★)
Comprehensive, Network-linked
Amplifier System for PSG & EEG



Somté
Explore Sleep ... Beat by Beat



Somnea[®]
Sleep Explorer
... Access Respiratory Analysis

2. Choose your software...



ProFusion PSG
World Class Acquisition, Review
& Analysis Software for PSG



**ProFusion neXus Lab
Management System** (★)
Complete laboratory
management system for total
patient data & laboratory control

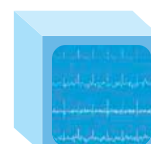


Digital Video (★)
Capture the moment, or the
entire study. Fully integrated
synchronised digital video
software with the latest
technology in data compression.



ProFusion EEG (★)
World Class Acquisition, Review
& Analysis Software for EEG.

3. Add some options...



ECGfree
Quickly and easily remove any ECG
artefact from any trace with ECGfree
technology without compromising your
raw data.



neXus Remote Access (★)
Get easy web or network access to
sleep studies from anywhere, with the
confidence of full data security



ProFusion Plus
Do more with your research data -
derive other data channels, get
spectral analysis or export to industry
standard software packages.



ProFusion SDK
Software developers kit gives full
access to raw data in ways limited only
by your imagination. It's the first choice
of Researchers worldwide.



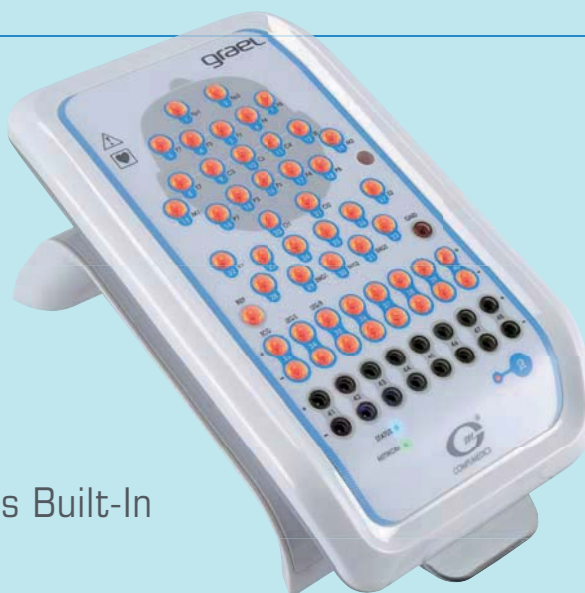
Cardiac Analysis software
Do more with the ECG data you are
already collecting. A complete cardiac
analysis in one package.

★ - Supports EEG too

* Product not available in the USA

NEW Sleep Innovations only from Compumedics.

grael™ HD PSG



- > High Definition PSG
- > One-box, One-cable
- > All Common Sleep Sensors Built-In

True High-Definition PSG Signals

High Definition PSG

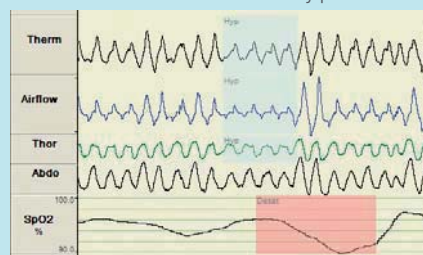
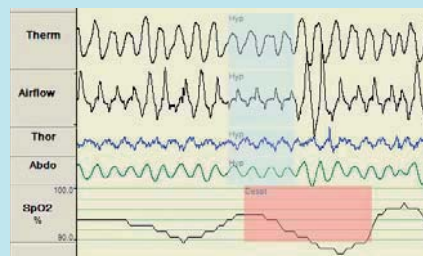
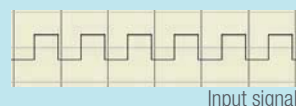
- Full PSG in *High Definition*
- 24-bit amplifier - *The first of it's kind*
- DC-coupled inputs - *See what is really happening (see right)*
- Differential ECG and EMG provide unparalleled signal quality
- Calibrated flow measurement
- Respiratory impedance signal from ECG leads
- Optimised for research applications
- Exceptional noise and artifact rejection
- Exceeds all latest industry guidelines for Digital Specifications

Built for improved efficiency

- Quick disconnect for increased ease of use
- Convenient Bed-side impedance checking with "Light-up-impedance"
- Labeled to current industry guidelines
- Ideal spacing of touch-proof connectors for easy access
- Cradle can be desk or wall mounted to suit any environment

One-box, One-cable solution

- All connections are integrated
- Built-in light sensor
- Sleep-optimised oximeter
- Integrated RIP band technology
- New high sensitivity microphone
- "Calibration-free" position sensor
- A single cable to the Grael provides both power and data transmission



Compumedics

the World of Sleep

at your fingertips



Unrivalled Solutions

Recording Devices

- ✓ High-definition PSG/EEG (Grael)
- ✓ Cost-effective digital sleep system (E-Series PSG/EEG)
- ✓ Wi-Fi Connectivity (Siesta802)
- ✓ Home Sleep Testing (Somte & SomtePSG)
- ✓ Reliability from over 20 years experience in producing digital PSG systems

ProFusion PSG 3

- ✓ Validated automatic analysis of sleep, respiratory and other parameters
- ✓ Fast and efficient scoring
- ✓ Customizable reports
- ✓ Dedicated research applications available

ProFusion EEG4







- ✓ New, easy-to-use, Ribbon user controls
- ✓ Full montage sequencing for routine EEG, with easy event annotations
- ✓ Intelligent reporting with easily modified templates
- ✓ LTM Ready - online editing and simultaneous viewing of multiple events

ProFusion neXus

- ✓ Lab Management System for streamlined efficiency and productivity
- ✓ Full HIS integration
- ✓ Remote access
- ✓ Patient scheduling
- ✓ Workflow management

Compumedics provides the only full spectrum of Sleep products, ranging from Home Sleep Testing (HST), to the premier **Grael™** of Sleep monitoring. All seamlessly integrate with the specialist ProFusion Suite and neXus Lab Management System.

Compumedics - Your complete solution.


Type IV	Type III	Type I/II	Type I	Premier Type I Clinical & Research
 Somnea*	 Somte	 Somte PSG	 E-Series	 Siesta 802
				 Grael - The world's first High Definition PSG

ProFusion PSG3 Software

Gold standard Sleep Software Suite with industry proven Automatic Sleep Staging and respiratory events.

ProFusion neXus Lab Management System

Lab Management System for enhanced productivity and efficiency.



*Product not available in the USA

Compumedics' operations consist of five divisions - each with its own product focus



www.compumedics.com

If you would like to receive the Compumedics Vista Update via Email, please send your details and email address to Marketing@compumedics.com.au

Compumedics Limited, Australia:
Headquarters
 30-40 Flockhart Street
 Abbotsford VIC 3067, Australia
 Ph: +61 3 8420 7300
 Fax: +61 3 8420 7399
 Free Call: 1800 651 751

Compumedics USA, Limited:
 6605 West WT Harris Blvd, Suite F
 Charlotte, NC 28269
 Toll Free: +1 877 717 3975
 Ph: +1 704 749 3200
 Fax: +1 704 749 3299

Compumedics Germany GmbH:
 Global HQ for Compumedics DWL
 Josef-Schüttler-Strasse 2
 D-78224 Singen, Germany
 Ph: +49 7731 79 76 9-0
 Fax: +49 7731 79 76 9-99

