

Around the World with Compumedics!

Compumedics

# vista

A COMPUMEDICS CLIENT UPDATE, ISSUE 20

CELEBRATING

over  
**20** YEARS

of SLEEP  
DIAGNOSTICS  
EXCELLENCE

Since 1987

**Come and see us at -**

- > **World Association of Sleep Medicine**  
- Sao Paulo, Brazil, Nov 7 - 11, 2009
- > **16th Annual Meeting of German Sleep Society**  
- Leipzig, Germany, Nov 12 - 14, 2009
- > **French Society of Medical Research & Sleep**  
- Marseille, France, Nov 19 - 21, 2009

## Compumedics Unwraps GRAEL!

Compumedics is very excited to unveil our newest innovation, the GraeL HD-PSG/EEG amplifier to the world in November 2009!

Our most technologically advanced amplifier yet, and the world's first High Definition PSG amplifier, Compumedics GraeL is available in two models: GraeL for dual-platform PSG & EEG or GraeL EEG for dedicated EEG studies.

These premier Sleep events are the perfect venues to showcase the latest advancement in Sleep and EEG amplifier technology.

GraeL will be featured prominently at the Compumedics stands - front & centre so our customers and prospects are able to view it from every angle to be able to appreciate the sleek design and outstanding features of this product.

While GraeL will definitely be the star of the show, we will also be showcasing various other Compumedics products: Neuvo LTM EEG, E-series, Somté and Somté PSG systems. There continues to be strong emerging interest in home and ambulatory studies and with four custom-configurable products available from Compumedics, we had definitely have something for everyone.

With the unwrapping of GraeL for the world to see, Compumedics will again showcase the basic fact that no other company has the commitment to be worldwide leaders in innovation, technology and customer support like we do!



**NEW**

### GraeL PSG/EEG

- World's First True High-Definition PSG/EEG
- One-Box, One-Cable
- Fully Integrated AASM Signal Set

## INSIDE

- Build your ideal Sleep Lab - It's easy with Compumedics **2**
- NEW GraeL - True HD PSG/EEG **3**
- Quik Tips - Profusion PSG3 **4**

For queries, please email us at [marketing@compumedics.com.au](mailto:marketing@compumedics.com.au)



COMPUMEDICS  
"Defining Life's Signals"

[www.compumedics.com](http://www.compumedics.com)

# Building your sleep lab is as easy as...

Let us show you how.

No matter what your needs are for a sleep lab, Compumedics has everything you require to build a great facility. Whether it is a large, multi-site service, an independent two bed lab or anything in between, Compumedics has the hardware and software solutions you can rely on to run your lab efficiently, effectively and reliably. In addition, Compumedics can reliably meet any of your research needs.



## 1. Choose your hardware...

## 2. Choose your software...

## 3. Add some options...



**Graef PSG/EEG (★)**  
World's First High-Definition  
PSG/EEG



**Somté PSG**  
Full PSG... Absolutely Anywhere



**Siesta (★)**  
Revolutionary PSG & EEG  
Diagnostics for a Wireless World



**Safiro (★)**  
Diagnostic Excellence in Ambulatory  
PSG & EEG



**E-Series (★)**  
Comprehensive, Network-linked  
Amplifier System for PSG & EEG



**Somté**  
Explore Sleep ... Beat by Beat



**Somnea**  
Sleep Explorer  
... Access Respiratory Analysis



**ProFusion PSG**  
World Class Acquisition, Review  
& Analysis Software for PSG



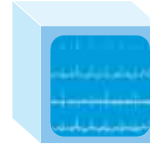
**ProFusion neXus Lab  
Management System (★)**  
Complete laboratory  
management system for total  
patient data & laboratory control



**Digital video (★)**  
Capture the moment, or the  
entire study. Fully integrated  
synchronised digital video  
software with the latest  
technology in data compression.



**ProFusion EEG (★)**  
World Class Acquisition, Review  
& Analysis Software for EEG.



**ECGfree**  
Quickly and easily remove any ECG  
artefact from any trace with ECGfree  
technology without compromising your  
raw data.



**neXus Remote Access (★)**  
Get easy web or network access to  
sleep studies from anywhere, with the  
confidence of full data security



**ProFusion Plus**  
Do more with your research data -  
derive other data channels, get  
spectral analysis or export to industry  
standard software packages.



**ProFusion SDK**  
Software developers kit gives full  
access to raw data in ways limited only  
by your imagination. It's the first choice  
of Researchers worldwide.



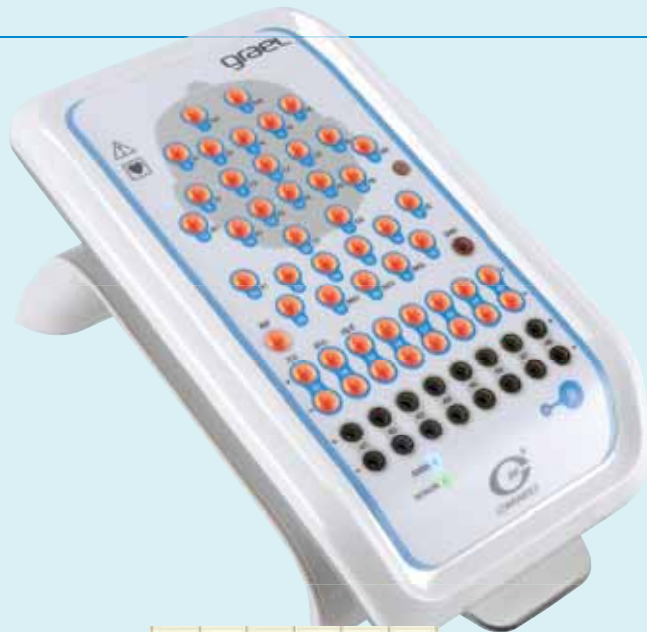
**Cardiac Analysis software**  
Do more with the ECG data you are  
already collecting. A complete cardiac  
analysis in one package.

★ - Supports EEG too

# NEW Sleep Innovations only from Compumedics.

## \* grael™ HD PSG

- > High Definition PSG
- > One-box, One-cable
- > Fully Integrated AASM Signal Set



### True High-Definition PSG Signals

#### High Definition PSG

- Full PSG in **High Definition**
- 24-bit amplifier - **The first of it's kind**
- DC-coupled inputs - **See what is really happening** (see right)
- Differential ECG and EMG provide unparalleled signal quality
- Calibrated flow measurement
- Respiratory impedance signal from ECG leads
- Optimised for research applications
- Exceptional noise and artifact rejection
- Exceeds all AASM Digital Specifications

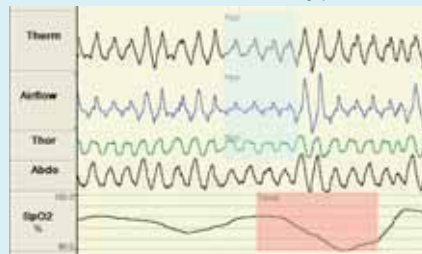
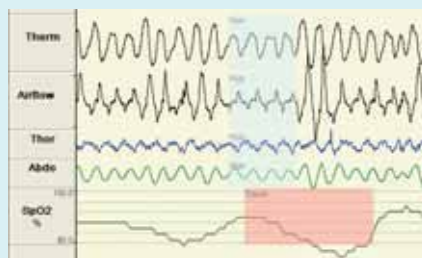
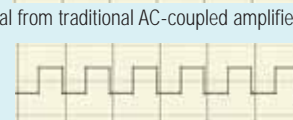
#### Built for improved efficiency

- Quick disconnect for increased ease of use
- Convenient Bed-side impedance checking with "Light-up-impedance"
- Labeled to current AASM guidelines
- Ideal spacing of touch-proof connectors for easy access
- Cradle can be desk or wall mounted to suit any environment

#### One-box, One-cable solution

- All connections are integrated
- Built-in light sensor
- Sleep-optimised oximeter
- Integrated RIP band technology
- New high sensitivity microphone
- "Calibration-free" position sensor
- A single cable to the Grael provides both power and data transmission

\* This product is not for sale in the USA pending FDA Market Clearance.



# Compumedics the World of Sleep at your finger tips



## Unrivalled Solutions

### Recording Devices

- ✓ High Definition PSG
- ✓ AASM Compliance
- ✓ Wireless (industry standard)
- ✓ Intuitive graphical interface on all HST systems
- ✓ Reliability from over 20 years experience in building PSG systems
- ✓ Full disclosure of raw data
- ✓ Integrated signal quality indicators
- ✓ Flexibility in signal options
- ✓ Industry standard sensors
- ✓ Real-time monitoring with digital video
- ✓ Software tailored for HST





### Profusion PSG 3

- ✓ AASM compliant
- ✓ Validated automatic analysis of sleep, respiratory and other parameters
- ✓ User friendly interface
- ✓ Customisable reports
- ✓ Dedicated research applications available

### Profusion Nexus

- ✓ Clinical enterprise software for streamlined efficiency and productivity
- ✓ Full HIS integration
- ✓ Remote access
- ✓ Patient scheduling

Compumedics provides the only full spectrum of Sleep products, ranging from Home Sleep Testing (HST), to the premier **Grael™** of Sleep monitoring. All seamlessly integrate with the specialist Profusion Suite and Nexus Enterprise Software. **Compumedics - Your complete solution.**

<b>Type IV</b>  Somnea	<b>Type III</b>  Somté	<b>Type I/II</b>  Somté PSG	<b>Type I</b>    E-Series    Siesta 802    *Grael - The world's first High Definition PSG	<b>Premier Type I Clinical &amp; Research</b> <b>NEW!</b>
<b>Profusion PSG 3 Software</b> Gold standard Sleep Software Suite with industry proven Automatic Sleep Staging and respiratory events.		<b>Profusion Nexus Enterprise</b> Clinical Enterprise Solutions for enhanced productivity and efficiency.		

\*This product is not for sale in the USA pending FDA Clearance to Market. Contact your local Compumedics representative for product availability in your local area.

Compumedics' operations consist of five divisions- each with its own product focus



[www.compumedics.com](http://www.compumedics.com)

**If you would like to receive the Compumedics Vista Update via Email, please send your details and email address to [Marketing@compumedics.com.au](mailto:Marketing@compumedics.com.au)**

**Compumedics Limited, Australia: Headquarters**  
 30-40 Flockhart Street  
 Abbotsford VIC 3067, Australia  
 Ph: +61 3 8420 7300  
 Fax: +61 3 8420 7399  
 Free Call: 1800 651 751

**Compumedics USA, Limited:**  
 6605 West WT Harris Blvd, Suite F  
 Charlotte, NC 28269  
 Toll Free: +1 877 717 3975  
 Ph: +1 704 749 3200  
 Fax: +1 704 749 3299

**Compumedics Germany GmbH:**  
 Global HQ for Compumedics DWL  
 Josef-Schüttler-Strasse 2  
 D-78224 Singen, Germany  
 Ph: +49 7731 79 76 9-0  
 Fax: +49 7731 79 76 9-99

