

over  
**20 YEARS**  
of SLEEP  
DIAGNOSTICS  
EXCELLENCE  
Since 1987

COMPUMEDICS CLIENT UPDATE, ISSUE 30

## INSIDE

- **CURRY Neuroimaging Suite - a preview.** 2
- **New York based Winthrop Sleep Disorders Center upgrades to Compumedics** 3
- **Compumedics' Premieres at key French Congress** 3
- **QUICK Tips & Shortcuts** 3
- **EVENTS UPDATE** 4

# Milestone EEG contract win to equip the new & internationally acclaimed **Royal Children's Hospital, Melbourne.**

Compumedics Limited is pleased to announce another significant milestone by being awarded the contract to supply EEG equipment for the Neuroscience Centre at the new **Royal Children's Hospital Melbourne (RCH)**, which opens in late 2011 in Australia.

Upon opening, the RCH's paediatric epilepsy / EEG facility will be the largest in the Southern Hemisphere. The contract to deliver the latest Compumedics EEG technologies includes the new Compumedics **NEUVO®LTM EEG, Grael®HD and Siesta®802** wireless systems. The EEG systems are to be used for routine clinical EEG. This purchase represents another major milestone in Compumedics' entry into the global \$250 million LTM/Neurophysiology market.

The sale, with an order value of more than AUD500K, will deliver Compumedics' latest EEG technologies into the RCH. The supplied **NEUVO®LTM EEG** systems can record 64 individual channels of high-density EEG data on a single patient for days or weeks at a time. The **Grael®HD** system provides high definition EEG signals and the **Siesta®802** remains the industry's most compact wireless EEG recording device. Compumedics' digital amplifier technology and breadth of EEG diagnostic offerings is superior to all other competitors and provides Compumedics with a unique point of differentiation. Compumedics' product offerings provide higher quality brain recordings and more precise brain analysis, improving patient outcomes.

The RCH Melbourne is one of the world's great children's hospitals. It is internationally recognised as a leading centre of paediatric treatment, teaching and research. The RCH is the major specialist paediatric hospital in Victoria and its care extends to

children from Tasmania, southern New South Wales and other states around Australia and overseas.

The RCH Epilepsy Program states that "1 in 20 (5%) children will have a seizure of some form during childhood. About 1 in 200 (0.5%) children have epilepsy."

Cameron Charles, Compumedics' Australian EEG Business Manager, said, "This sale which includes Compumedics' latest EEG solutions **Grael®HD, NEUVO®LTM and Siesta®802** will provide the RCH with the best EEG technologies available on the market today and will be used to provide better care of children with epilepsy and neurological problems."

Compumedics has made significant investments in product development, targeting the neuro-diagnostics market, to leverage its expertise in high-end amplifier design and physiologic signal processing.

Dr. David Burton, Chairman and Chief Executive Officer of Compumedics Group commented,

"This contract is another important milestone for our Company. It reinforces our commitment to our customers and the patients under their care. The world-class Royal Children's Hospital installation establishes a new and innovative standard for long term EEG monitoring. This project further underpins our strategy to grow our business across this important but relatively new market sector for Compumedics."

**For more news on Compumedics, visit us at [www.compumedics.com](http://www.compumedics.com)**



Distributor partner enquiries welcome.  
Please email us at [marketing@compumedics.com.au](mailto:marketing@compumedics.com.au)

Find us on:



twitter  
@compumedics



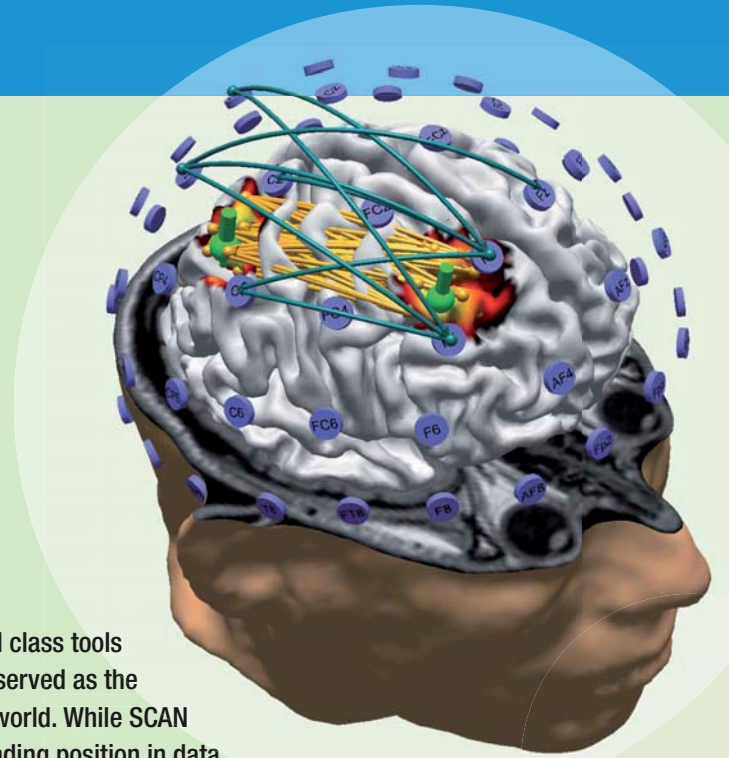
facebook

Coming Soon ...

# CURRY<sup>®</sup>

NEUROIMAGING SUITE

## - A Preview.



For more than 25 years Neuroscan has developed and provided world class tools for EEG data processing and signal analysis. The SCAN software has served as the primary tool for EEG applications in more than 3000 labs around the world. While SCAN has seen many updates throughout the years and still maintains a leading position in data acquisition and processing software, the time has come for a significant change in the way we think about data processing and analysis.

This change is the new **CURRY<sup>®</sup> Neuroimaging Suite**. The CURRY<sup>®</sup> Neuroimaging Suite will replace the SCAN software as our acquisition and data processing software. The history of the CURRY software is well known. Throughout the world, CURRY has the well deserved reputation as the most advanced and comprehensive tool for Multimodal Neuroimaging. CURRY's strength has always been centered on combining functional data such as EEG and MEG with imaging data from MRI and CT to optimize source reconstruction.

Now we are combining CURRY's strength with the acquisition and signal processing features of the SCAN software for a comprehensive EEG acquisition, data analysis, source localization and source imaging package.

The CURRY Neuroimaging Suite software is divided into a number of license modules that can stand alone or work together to maximize your labs' flexibility. The chart below translates the existing SCAN and CURRY software licenses to the equivalent license modules of the CURRY Neuroimaging Suite. In addition, there is new functionality with the NETWORK license providing true network access to the software and enhanced visibility of your maintenance contract state with the MAINTENANCE license.

Current Software Licenses	Equivalent CURRY Neuroimaging Suite software licenses
SCAN Acquire	Acquire
SCAN Edit (Analysis)	Signal Processing
SCAN Full	Acquire, Signal Processing
SOURCE 2	Basic Source and Image Analysis
SOURCE 5	Signal Processing, Basic Source and Image Analysis
CURRY	Signal Processing, Basic & Advanced Source and Image Analysis



The **CURRY Neuroimaging Suite** provides a continuum of tools ...

acquisition **signal processing** time domain analysis automation  
 source reconstruction statistical analysis **imaging analysis** co-registration  
 visualization integration with third party software **report generator**

**that is unprecedented in the EEG world today.**



# INTERNATIONAL NEWS



## The World's First Accredited and Paperless Sleep Lab upgrades to Profusion Nexus & High-Definition GraeL.

New York based **Winthrop Sleep Disorders Center** needed to upgrade their laboratory system in an effort to remain leading edge.

Compumedics **GraeL High-Definition PSG/EEG** system and their **ProFusion Nexus Lab Management system**, was the solution.

To read the rest of this article, from **Sleep Diagnosis and Therapy**, Vol 6 No 1, January-February in full please go to:

<http://www.compumedics.com/article.asp?p=37&a=309>



GraeL HD

## Compumedics Premieres at key French Congress.

Compumedics exhibited for the first time at the **15th Congress of Pneumology** in Lille, France in January 2011. Compumedics French Sales Manager Olivier Eymin and Compumedics European Business Director, David Vermeiren attended this event and have encouraging prospects to expand Compumedics' business in France.

Since starting direct sales operations in France, Compumedics has had a triumphant run with products such as the latest Somté PSG 2.0. Compumedics is geared up for many more such successes in this key country in the near future.



Photo left: David Vermeiren (first from the left) and Olivier Eymin (second from the right) with clients.



Somté PSG 2.0

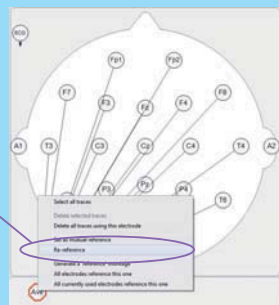
## QUICK Tips & Shortcuts

For Profusion EEG 4 users

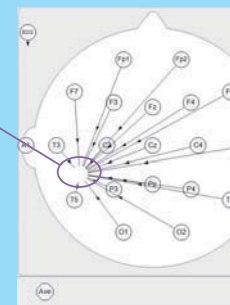
### Quickly re-reference an electrode

When creating a montage you can reference an electrode. *Here's how...*

1. Right mouse click on the electrode you want to re-reference and click "Re-reference"



2. Now you can move all the arrows to the new electrode.



# EVENTS UPDATE

S Sleep, N Neuroscan, D DWL, NS Neuroscience, G General

## MARCH 11

10th Rostock Symposium of Child Medicine DGSM meeting on Sleep Medicine & Neonatology	March 11-13	S	Rostock, Germany
Compumedics European Neuroscan School	March 14 - 18	N	Hamburg, Germany
DGKN (German Society for Clinical Neurology)	March 16 -19	NS	Munster, Germany
Southern Sleep Society	March 24 - 27	S	Louisiana, USA
11th Annual Focus on Respiratory Care & Sleep Medicine Conference	March 24 - 26	S	California, USA
TriHealth Pulmonary & Sleep Conference	March 30	S	Ohio, USA
Sleep & Breathing	Mar 31 - April 3	S	Prague, Czech Republic

Information on Compumedics' events is available at:

[www.compumedics.com](http://www.compumedics.com)

> Home > News > Upcoming Events

Compumedics host Education Events - both online and face-to-face. Compumedics is committed to educating our customers.

\*All information listed here is subject to change at Compumedics discretion without notice.

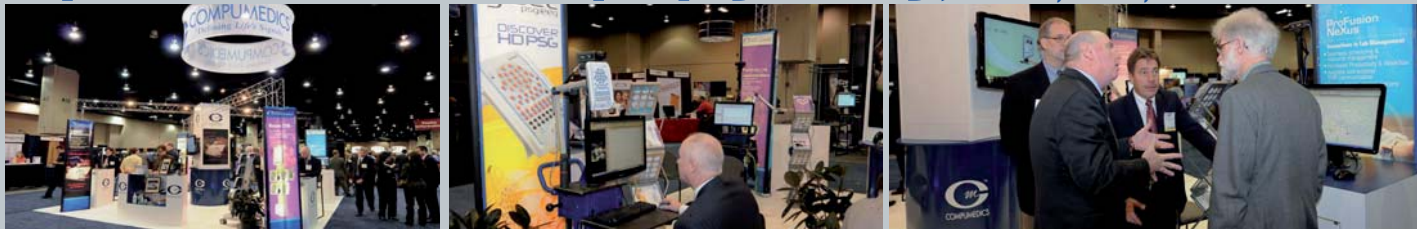
## APRIL 11

Northeast Sleep Society	April 1 - 2	S	Rhode Island, USA
Cognitive Neuroscience Society	April 2 - 5	NS	California, USA
Thoracic Society of Australia and New Zealand	April 2 - 6	S	Perth, Australia
DGP (German Society for Pneumology & Respiratory Medicine)	April 7-10	S	Dresden, Germany
Charles E. Henry Society of Electroneurodiagnostic Technologists Society Meeting	April 7 - 9	NS	New York, USA
American Academy of Neurology Annual Meeting	April 9 -16	NS	Hawaii, USA
Carilion Annual Respiratory Sleep Conference	April 15	S	Virginia, USA
Central Society for Electrodiagnostic Technologists	April 15 -16	NS	Minnesota, USA
Compumedics China Neuroscan School	April 18 - 22	N	Shanghai, China
Cairo International Neurology Conference	April 20 - 22	NS	Cairo, Egypt
Korean Scan & CURRY School	April 24 - 25	N	KIST University, Korea
Hong Kong Scan & MagLink Training	April 27 - 28	N	Hong Kong University
Alabama Association of Sleep Professionals	April 29 - 30	S	Florida, USA
Interactive CURRY Workshop	April 30	N	Hawaii, USA
North Carolina Society of Electroneurodiagnostic Technologists Meeting	April 30	NS	North Carolina, USA

## Compumedics at Medica, Düsseldorf, Germany, November 2010.



## Compumedics at American Epilepsy Society, Texas, USA, December 2010.



## Compumedics at Arab Health 2011, Dubai, UAE, January 2011.



## THE COMPUMEDICS DIVISIONS Defining Life's Signals

Compumedics' operations consist of five divisions - each with its own product focus



**Compumedics Sleep**  
Clinical Diagnostic Systems for Sleep Disorders



**Compumedics Neuroscan**  
World-leading Research EEG/ERP systems



**Compumedics Neuroscience**  
for Neurophysiology Clinical Diagnostic Systems



**Compumedics Neurological Supplies**  
Electrodes, sensors and Sleep laboratories and supplies for Neurology



**Compumedics DWL**  
Ultrasound Doppler Systems

**COMPUMEDICS**  
'Defining Life's Signals'

## CONTACT [www.compumedics.com](http://www.compumedics.com)

If you would like to receive the **Compumedics Vista Update via Email**, please send your details and email address to [Marketing@compumedics.com.au](mailto:Marketing@compumedics.com.au)

AF425 Issue 1

**Compumedics Limited, Australia:**  
**Headquarters**  
30-40 Flockhart Street  
Abbotsford VIC 3067, Australia  
Ph: +61 3 8420 7300  
Fax: +61 3 8420 7399  
Free Call: 1800 651 751

**Compumedics USA, Limited:**  
6605 West WT Harris Blvd, Suite F  
Charlotte, NC 28269  
Toll Free: +1 877 717 3975  
Ph: +1 704 749 3200  
Fax: +1 704 749 3299

**Compumedics Germany GmbH:**  
Global HQ for Compumedics DWL  
Josef-Schüttler-Strasse 2  
D-78224 Singen, Germany  
Ph: +49 7731 79 76 9-0  
Fax: +49 7731 79 76 9-99

