

Compumedics vista

A COMPUMEDICS CLIENT UPDATE, ISSUE 15



9th
World Congress on
Sleep Apnea Seoul

**Come and see us at Booth S-028
at World Congress of Sleep Apnea,
Seoul Korea.**

Get to know Innovations from Compumedics

Compumedics has been bringing **Innovations to the world of Sleep Diagnostics** and Neurology for over 22 years. We were the first with IP addressable amplifiers, and from there have added wireless amplifiers (in both WiFi and Bluetooth based configurations), as well as ambulatory and home sleep testing amplifiers. We innovate because we realize that a single solution is not the best way to meet the needs of every lab.

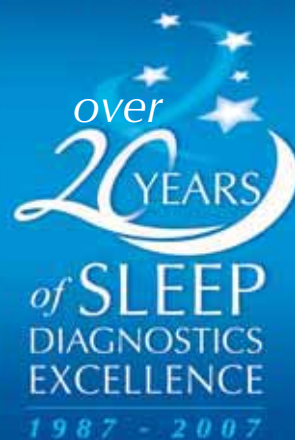
This is also why we develop all of our own software in-house. And it is why we continually update and enhance our software as we learn and integrate more of what our customers need and request. Advanced research, clinical or home sleep testing, the ProFusion PSG3 software suite has you covered in every instance.

Compumedics completes the total lab with our ProFusion NeXus LMS with optimized solutions for lab management, scheduling, HIPPA compliance and data integration via HL7 interface options. Our innovations go beyond mere features and gimmicks to provide sound, total lab solutions - no matter what your area of focus.

**Contact Compumedics today and get to know
Innovations from Compumedics.**



CELEBRATING



INSIDE

- **Build your ideal Sleep Lab - It's easy with Compumedics** ②
- **NEW GraeL - True HD PSG/EEG** ②
- **NEW Updated Siesta802- Advanced Wireless Technology** ③
- **Kwangwon Korea CMP partner: an overview** ④

GraeL PSG/EEG

- **World's First True High-Definition PSG/EEG**
- **One-Box, One-Cable**
- **Fully Integrated AASM Signal Set**

Updated Siesta802 Advanced Wireless Technology in Sleep Data Recording.

... Just got even better!

**Distributor partner enquiries welcome.
Please email us at marketing@compumedics.com.au**



COMPUMEDICS
"Defining Life's Signals"

Building your sleep lab is as easy as...

Let us show you how.

No matter what your needs are for a sleep lab, Compumedics has everything you require to build a great facility. Whether it is a large, multi-site service, an independent two bed lab or anything in between, Compumedics has the hardware and software solutions you can rely on to run your lab efficiently, effectively and reliably. In addition, Compumedics can reliably meet any of your research needs.



1. Choose your hardware...

2. Choose your software...

3. Add some options...



Grael PSG/EEG (★)
World's First High-Definition
PSG/EEG



Somté PSG
Full PSG... Absolutely Anywhere



Siesta (★)
Revolutionary PSG & EEG
Diagnostics for a Wireless World



Safiro (★)
Diagnostic Excellence in Ambulatory
PSG & EEG



E-Series (★)
Comprehensive, Network-linked
Amplifier System for PSG & EEG



Somté
Explore Sleep ... Beat by Beat



Somnea
Sleep Explorer
... Access Respiratory Analysis



ProFusion PSG
World Class Acquisition, Review
& Analysis Software for PSG



**ProFusion neXus Lab
Management System** (★)
Complete laboratory
management system for total
patient data & laboratory control



Digital video (★)
Capture the moment, or the
entire study. Fully integrated
synchronised digital video
software with the latest
technology in data compression.



ProFusion EEG (★)
World Class Acquisition, Review
& Analysis Software for EEG.



ECGfree
Quickly and easily remove any ECG
artefact from any trace with ECGfree
technology without compromising your
raw data.



neXus Remote Access (★)
Get easy web or network access to
sleep studies from anywhere, with the
confidence of full data security



ProFusion Plus
Do more with your research data -
derive other data channels, get
spectral analysis or export to industry
standard software packages.



ProFusion SDK
Software developers kit gives full
access to raw data in ways limited only
by your imagination. It's the first choice
of Researchers worldwide.



Cardiac Analysis software
Do more with the ECG data you are
already collecting. A complete cardiac
analysis in one package.

★ - Supports EEG too

NEW Sleep Innovations only from Compumedics at the 2009 World Congress of Sleep Apnea.



graelTM
HD PSG

- > High Definition PSG
- > One-box, One-cable
- > Fully Integrated AASM Signal Set

True High-Definition PSG Signals

High Definition PSG

- Full PSG in **High Definition**
- 24-bit amplifier - *The first of it's kind*
- DC-coupled inputs - *See what is really happening (see left)*
- Differential ECG and EMG provide unparalleled signal quality
- Calibrated flow measurement
- Respiratory impedance signal from ECG leads
- Optimised for research applications
- Exceptional noise and artifact rejection
- Exceeds all AASM Digital Specifications

Built for improved efficiency

- Quick disconnect for increased ease of use
- Convenient Bed-side impedance checking with "Light-up-impedance"
- Labeled to current AASM guidelines
- Ideal spacing of touch-proof connectors for easy access
- Cradle can be desk or wall mounted to suit any environment

One-box, One-cable solution

- All connections are integrated
- Built-in light sensor
- Sleep-optimised oximeter
- Integrated RIP band technology
- New high sensitivity microphone
- "Calibration-free" position sensor
- A single cable to the Grael provides both power and data transmission

* This product is not for sale in the USA pending FDA Market Clearance. Pending global regulatory clearances.



Input signal



Recorded signal from traditional AC-coupled amplifier



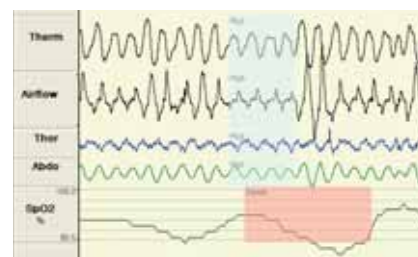
HD signal from Grael



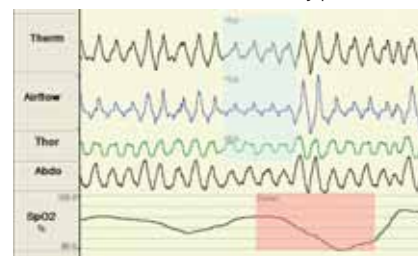
Traditional Limb EMG



HD Grael Limb EMG



Traditional oximetry performance



HD Grael oximetry performance



S I E S T ATM
802

The updated Siesta802- re-setting the benchmark, now more capable and powerful.

The World's first Wireless PSG/EEG system, the Compumedics **Siesta802** is again setting new benchmarks. The team at Compumedics has now enhanced the Siesta802 to be even more capable and powerful.

Compumedics has now armed the Siesta802 with the full complement of 802.11 standards a, b and g. This new development allows for the first time, the potential of the 5GHz band to be tapped for your benefit.

Enjoy these benefits with the updated Siesta802:

- higher transmission fidelity with less interference
- 5 times greater bandwidth capable up to 54Mbps allows more robust networking and sharing
- full channel complement for neurology applications and research at maximum sample rate
- improved range for increased versatility
- longer battery life with reduced power consumption

Compumedics has also included more user-friendly features including a programmable recording start time for convenience and increased study success.

Digital Video performance has been elevated with the updated Siesta802 enhanced video synchronisation.

The updated Siesta802- re-setting the benchmark, now more capable and powerful.

Contact Compumedics today for more information !

Compumedics Business partner in Korea: Kwangwon Medical

Located in Seoul, Korea, KwangWon Medical has been a business partner of Compumedics since 2004.

The company represents Compumedics entire PSG, EEG & Neuroscan product range in the Korean region.

Established in 1996, KwangWon Medical has been marketing diagnostic devices in the Korean market for over 10 years. During this time, CEO Lee Sang Won and his team, have firmly placed themselves as one of Korea's leading distributors of imported medical devices. They have also successfully achieved a positive reputation for excellent customer service and technical support.

KwangWon Medical has built an extensive list of high profile customers whom they have serviced over the past 10 years. These include the Samsung Medical Centre, Seoul National University Hospital, ChonNam National University Hospital, Pusan National University Hospital & KAIST.

Compumedics together with KwangWon Medical will be presenting at the World Congress of Sleep Apnea (Korea), and invite you to visit us at booth S-028 where we will be showcasing our latest Innovations for the world of sleep.



KWANGWON MEDICAL CO., LTD.
FOR YOUR BEST DIAGNOSIS

Kwangwonmedical co., ltd. :

4F, Yooil B/D, 200-29, Sungsan-Dong,

Mapo-Ku, Seoul, Korea 121-250

Tel: 82-2-374-9538

Fax: 82-2-374-9537

E-mail: kwangwon9907@unitel.co.kr

ABOUT COMPUMEDICS



Since 1987, Compumedics Limited has emerged as a world leader in the design, manufacture, and sales of diagnostic sleep, neurophysiology, research and transcranial Doppler systems. Compumedics' design expertise in the area of portable recorders and wireless data transmission is just one reason for our continued double digit growth in the USA year after year. Compumedics is improving people's lives through products, exceptional service and a full range of consumables and accessories brought to you by dedicated people who care.

THE COMPUMEDICS DIVISIONS *Defining Life's Signals*

Compumedics' operations consist of five divisions- each with its own product focus



CONTACT www.compumedics.com

If you would like to receive the Compumedics Vista Update via Email, please send your details and email

address to Marketing@compumedics.com.au

Compumedics Limited, Australia: Headquarters
30-40 Flockhart Street
Abbotsford VIC 3067, Australia
Ph: +61 3 8420 7300
Fax: +61 3 8420 7399
Free Call: 1800 651 751

Compumedics USA, Limited:
6605 West WT Harris Blvd, Suite F
Charlotte, NC 28269
Toll Free: +1 877 717 3975
Ph: +1 704 749 3200
Fax: +1 704 749 3299

Compumedics Germany GmbH:
Global HQ for Compumedics DWL
Josef-Schüttler-Strasse 2
D-78224 Singen, Germany
Ph: +49 7731 79 76 9-0
Fax: +49 7731 79 76 9-99



COMPUMEDICS
'Defining Life's Signals'